



TIMBER TOWNS VICTORIA

2021 22 Annual Report



Postal: PO Box 152, Portland Vic 3305
Phone: 0428 891 728
Email: secretary@timbertownsvictoria.com.au
Website: www.timbertownsvictoria.com.au

The local government voice on timber related issues

Contents

| | |
|--|--|
| Introduction | |
| Victorian Forestry Economic Contribution | |
| A Sustainable Industry | |
| What we do | |
| President's report..... | |
| Executive Committee | |
| Membership..... | |
| Membership and Services..... | |
| Strategic directions addressed in 2021 – 2022 | |
| TIRES Timber Industry Roads Evaluation Study 2023 - 2027..... | |
| Trees and Carbon..... | |
| Wood Encouragement Policies..... | |
| The Ultimate Renewable™ | |
| Treasurers Report | |
| Timber Towns Victoria Presidents | |



Introduction

Our history

Timber Towns Victoria (TTV) is an incorporated local government association representing the interests of municipal councils in relation to forestry on both public and private land. The Association's primary function is to provide a forum for local government to address the management of forests and forest industries and their impact on local communities.

Key policy areas

Timber Towns Victoria's priorities vary over time reflecting the changing nature of forest industry. However, several key long-term challenges face the local government sector in relation to the management of forests on both public and private land.

These include the:

- provision, maintenance, and funding of infrastructure required for timber haulage
- long term social and economic viability of communities reliant on forest related industries and the impact of policy change on such communities.
- valuation and rating of private and leased land used for commercial timber production
- fulfilment of legislative responsibilities for ensuring compliance with forestry regulations on private land
- planning control of plantation expansion to ensure balanced and appropriate land use and adequate fire prevention.
- responsibility as representatives of diverse communities, to ensure that Victorian forests on public and private land are managed sustainably for the long-term benefit of all forest users





Victorian Forestry Economic Contribution

The Victorian forest products industry is a significant contributor to the Victorian and Australian economies:



Victoria's plantation estate at **418,000 ha** covers just **1.9%** of Victoria, or **3.4%** of the land classified as farmland. It is mostly located in the Green Triangle, North East and Gippsland.



Victoria's plantation estate is **53%** softwood and **47%** hardwood. The softwood estate reached a peak of **226,400 ha** in **2009-10** and has been relatively stable since then. The hardwood estate was stable until 2013-14; however has declined by **12,400 ha** or **6%**



Victoria has nearly **8 million ha** in its public land estate. Around half or **3.1 million ha** is multiple use forests, of which around **450,000 ha** is considered available and suitable for harvest. Of this, VicForests harvests around **2,500 ha** annually, or **0.04%** of the total public land estate.



In 2016, Victoria had **34 sawmills**, of which **nine** were softwood mills, **eight** post and pole processors, **three** wood based panel processors and **five** paper and paperboard processors.



Victoria produces **8.9 million m³** or **27%** of the nation's log supplies - with native hardwood contributing **28%** of Australia's native hardwood logs, hardwood plantations supply **34%** of Australia's hardwood log, and softwood plantations supply **23%** of Australia's softwood logs.



Victoria grows more plantation wood than any other state, producing **8.9 million m³** or **27%** of the nation's log supplies - with native hardwood contributing **28%** of Australia's native hardwood logs, hardwood plantations supply **34%** of Australia's hardwood log, and softwood plantations supply **23%** of Australia's softwood logs.



There is **no waste** in timber processing as all parts have a use.



Victoria's softwood and hardwood plantations and wood products store more carbon than any other state (**100 Mt C** or **25%**), while Victoria's native forests and environmental plantings store a further **1,942 Mt C** (or **9%** of the nation's native forest carbon stores).



The gross value of Victoria's log production is **\$734 million**, with the value per log volume comparable across native and plantation sectors.



Victoria has the largest export volume by some margin (**around 5.3 million m³/year**).



Victoria contributes **\$7.95 billion** in direct sales, or **32%** of the nation's forest product primary and secondary manufacturing by value.



Direct employment of more than **21,000** people across the supply chain with the full supply chain supporting up to **50,000 jobs**.

What we do

Representation and advocacy

TTV provides an important service to member councils which includes the increased ability to liaise with the state and federal government, an important information service and the value of being involved with a state-wide network.

Recognised as the peak local government body on forestry, TTV provides policy advice on various forestry policy and planning matters.

A core objective of the association is to provide all Victorian municipalities, with an interest in forest management the opportunity to actively contribute to policy setting and information dissemination as required.

TTV has links with similar associations in other states to increase local governments capacity to be effectively involved in forestry policy setting at both the national and state level.

Our objectives

- To provide leadership and advocacy for the interests of local government on the impact of timber related issues on local government and their communities, particularly roads infrastructure
- To provide a forum for local government to share information and to address timber related issues that affect local government communities
- To be a credible and respected stakeholder on timber issues, representing local government in working with the community, all levels of governments and the timber industry
- To support and assist councils managing the impact of timber related issues
- To support sustainable communities and local government infrastructure.

Communication

TTV delivers an important communication service to its member councils, providing regular information about forestry policy and management initiatives. The association communicates directly with member councils through delegated representatives, with circulated media releases, submissions, through the association's Facebook and a resource portfolio on our website. TTV facilitates the sharing of knowledge, experience, and information between its members through regular meetings of representatives and other communication channels.





President's Report

Cr Karen Stephens



It is my absolute pleasure to present the 2022 TTV annual report on behalf of our member Councils. Another busy year ensured that TTV was kept on its toes taking up several issues effecting the forestry sector in Victoria. Of course, the ongoing issue of the state government's native timber industry phase out commencing in 2024. As we continue to advocate for the industry and join forces with other timber organisations, we hope that collectively our voice can be heard stronger and louder as a group effort in the fight to save the industry not only for the local economies and supply chain but also for the vital skills that are required to keep Victorian communities safe during bushfire and storm events.

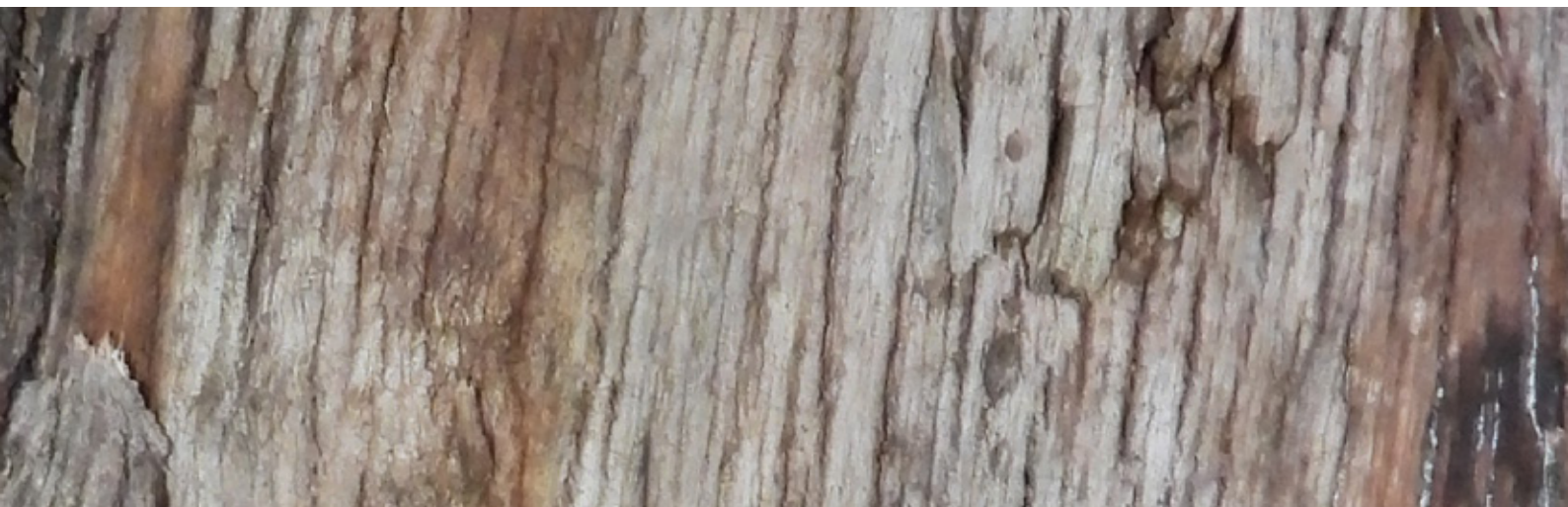
This year we welcomed two Victorian Councils to our membership. Gannawarra Shire Council is located in the Northern part of Victoria bordered by the Murray River and covers 1,735 square kilometres. The Gunbower State Forest is a significant source of River Red Gum timber, supplying an historic sawmill in Koondrook. Ballarat City Council lies within a gently undulating section of the Midland Plains in Western Victoria, about 80 kms from Melbourne and hosts the largest number of timber industry GST registered businesses in the TTV member areas at 44 registered businesses. Ballarat City Council is a return member of the Timber Towns Victoria Association. We welcome both Gannawarra Shire Council and Ballarat City Council to our


membership and hope that they along with our other members will continue to benefit from being a member of TTV for many years to come.

An extensive audit of the TTV 2019-2022 Strategic Plan has taken place together with the development of our new Strategic Plan 2022-2025. The 2019-2022 Strategic Plan Audit has revealed that as an Association, TTV has maintained momentum and made many achievements, with the assistance of the members input, the committee contribution, and our administration support officer.

These include:

- Meetings with members of Federal Parliament and members of Victorian State Government in the second half of 2021 to discuss the native timber industry issues.
- Voiced opinions with letters to members of Parliament on various issues affecting the timber industry including
 - Requesting an audit of the Victorian Forestry Plan
 - Third party litigation issues in Victoria
 - Thanking those members of parliament supporting motion for the Victorian Government to Production of Documents for the native timber industry.
 - Providing support to the Forest and Woods Products Association application to undertake wood trials in the Green Triangle region



- Letter of petition to retain sustainable native timbers
 - Sought State Government funding and successfully received a grant of \$75,000 to assist with the review TIRES report 2023-2027.
 - Engaging a timber industry expert consultant to research and collect data required to create the 2023-2027 TIRES report.
 - A Native Timber Round Table forum was held in Heyfield with at least twelve industry body representatives, six members of Parliament and four member Councils discussing the decision of the phase out of the industry and the potential way forward.
 - Produced the TTV comprehensive Domestic Value Add report – Specialised Analysis for the Timber Towns Victoria Council Areas that provides valuable statistics generated from the timber industry, giving us 'evidenced based data' for advocacy.
 - Invited to contribute to the Victorian Major Event Review on the impacts of the 2019-2022 bushfires and later gave a presentation to the Regional Forest Agreements Major Event Review further to TTV's Submission.
 - TTV made a number of submissions to Government.
 - Continued to maintain momentum by circulating media releases on major events and issues facing the industry.
- Moving forward, TTV will continue to advocate on issues affecting the timber sector that impact on our member councils. The review of the TIRES report 2023-2027 provides the platform to advocate to Victorian State and Federal Government for infrastructure funding that supports critical road and bridge upgrades across the state, required for the transport of product to market.
- To executive member team Rob & Tom and committee members I sincerely thank you once again for your dedication and support throughout the year.
- To Rachael Healy, on behalf of the committee I extend our sincere appreciation for keeping us all on track and for your energy and enthusiasm, which is boundless.
- Yours sincerely,
- 
- Cr Karen Stephens
President



Executive Committee

2021 – 2022



President and Chair
Cr Karen Stephens
Glenelg Shire



Vice President
Cr Robert Vance
Pyrenees Shire



Treasurer
Cr Tom Sullivan
Moorabool Shire



Executive Member
Cr Michael Leaney
Baw Baw



Executive Member
Cr Sonia Buckley
East Gippsland



Executive Member
Greg Burgoyne
Glenelg Shire



Executive Member
Dale Harriman
Latrobe City



Executive Member
Mark Coleman
Wellington

Membership

Membership of the association is open to all Victorian municipalities where forest industries are recognised as significant contributors to the economy and community. Forest based industries and other interest groups are not represented by the Association. Each member council may nominate two representatives to attend meetings, one of whom must be an elected councillor. Administration of TTV is vested in the Executive Committee. A President,

Vice President and Treasurer are appointed annually, and the Association is supported by a part-time administration support officer. Members meet on alternate months to the General Meetings of Association. This year TTV represented twelve member councils across the state. These are grouped below according to the Victorian regions, and in a map on Victoria containing Municipal Council Boundaries.

| Gippsland | Central | South West | North |
|------------------------------|-----------------------------|-----------------------|--------------------------|
| Baw Baw Shire Council | Colac Otway Shire Council | Glenelg Shire Council | Gannawarra Shire Council |
| East Gippsland Shire Council | Golden Plains Shire Council | Moyne Shire Council | |
| Latrobe City Council | Moorabool Shire Council | | |
| Wellington Shire Council | Pyrenees Shire Council | | |
| | Ballarat City Council | | |





Strategic direction

Addressed in 2020 – 2021

Government Relations

Timber Towns Victoria has grown and maintained its relationship with both the State and Federal Governments. Even in an ever-changing environment and governments, TTV recognises the full importance of keeping discussions open on relevant topics with Members of Parliament and maintaining a good rapport with those members also.

The Native Timber Industry issue brief

With the announcement of the phase out of the native timber industry announcement by the Victorian Government in November 2019, the tone of our advocacy work continued and strengthened around this topic during 2021 / 2022. In May 2021 TTV wrote letters to all members of the state opposition and all members of the Federal Government, requesting a meeting to discuss the Victorian Governments plan to phase out the state's native timber industry by 2030. By June of 2021 TTV had met with members of parliament from the Liberal and National Parties at Parliament in Melbourne and in November met with Federal Members of Parliament to discuss a range of topics including imported timber products conditions, DNA testing /Bio security, evidence of reason for shutting the industry down, and presenting the TTV Industry Data & Analysis Domestic Value Add Report.

In July 2021 TTV received correspondence from Ben Morton on behalf of the Prime Minister the Hon Scott Morrison regarding the native timber industry in Victoria.

In October 2021 TTV wrote Thank you letters to members of parliament; Jeff Bourman, Melina Bath and Tim Quilty for supporting and succeeding with Jeff Bourmans motion for the government to 'Production of Documents' for the native timber industry.

During the later part of 2021 members agreed that TTV arrange a Gippsland Round Table Forum on the Native timber issues with members of parliament and timber industry organisations in Heyfield. Due to State Government lock downs and restrictions as a result of the COVID -19 pandemic, the round table meeting was delayed until 20 April 2022. Industry body representatives, Members of Parliament and affected Member Councils all came together to discuss and pave a way forward. The meeting was hailed a success, and since then TTV has been working closely with both the Victorian Forest Products Association, the Australian Forestry Contractors Association and other advocacy groups to form a strategy to secure the industry's future.

Other interactions with Government

During the 2021 / 2022 membership year, Timber Towns Victoria corresponded with Members of Parliament on a range of subjects but not limited to the following.

TTV received correspondence from Shadow Minister for Environment & Climate Change Bridget Vallence regarding Andrews Government intention to debate the Forests Legislation Amendment (Compliance and Enforcement) Bill 2019 in the Legislative Council.



TTV received correspondence from Senator the Hon Jonathan Duniam Assistant Minister for Forestry and Fisheries regarding TTVs submission to the Victorian Governments review of the Code of Practice for Timber Production.

TTV received correspondence from Assistant Minister for Forestry, Johnathon Duniam regarding the Victorian Government's decision to cease native forest harvesting by 2030.

In 2021 the TTV President was appointed to the Victorian Forestry Plan Advisory Committee by the Minister, The Hon. Mary Anne Thomas.

After writing to the Minister, The Hon. Mary-Anne Thomas in December 2021 regarding timber industry stand downs and supply issues arising from third-party litigation against

VicForests, correspondence was returned from The Hon. Mary-Anne Thomas in January 2022 recognising our issues raised and outlining the state government's immediate action around those issues.

TTV writes to the Victorian Auditor General's office requesting an audit of the Victorian Forestry Plan receives correspondence from the Victorian Auditor General responding to audit request.

TTV received correspondence from Dr Mihai Daian, Forest Research Scientist, Forest and Land Sciences for the Australian Bureau of Agricultural and Resource Economics and Sciences (ABARES) that the research had come to an end.



Transport and Infrastructure

Timber Towns Victoria was successfully granted funding through the Victorian Department of Transport to assist in creating a Timber Industry Roads Evaluation Study (TIRES) report for the roads which lie within the member councils. The report was commissioned early 2022 and is expected to be completed mid-year 2022.

Land Use Management

In late 2021, The Industry Domestic Value Add report - specialised analysis for the Timber Towns Victoria Council areas 2021, was finalised and endorsed for publication. This report has been vital in providing 'evidence based' information to assist the industry with future planning in the member council areas with industry facts and statistics.

TTV President receives an invitation in August 2021 to a one-on-one interview with the Independent Panel for the Victorian Major Event Review on the impacts of 2019-2020 bushfires. TTV President then gave a presentation to the Regional Forest Agreements Major Event Review in September 2021 further to TTVs Submission.

Timber Towns Victoria made submissions to the following subjects in the 2021 / 2022 membership year:

- 2022 Proposed Variation of the Code of Practice for Timber Production (2014).
- National Farm Forestry Strategy.
- Regional Forest Agreements Major Event Review.
- Code of Practice for Timber Production.
- Primary Production Climate Change Adaption Action Plan.

TTV Development

Timber Towns Victoria continually seeks increased awareness of TTV by maintaining an active social media presence through sharing relevant information on Facebook and Twitter, and continues to advocate to on timber related issues. TTV gave several media releases in the 2021 / 2022 membership year covering a multitude of topics including welcoming protective laws for forestry workers, the success of the native timber round table meeting, welcoming funding boost to the industry, expressing disappointment over the Traditional Owners that were targeted in the Wombat State Forest issue, exposing myths and falsehoods in the mixed species timber industry, releasing the TTV industry domestic value add report, welcoming transparency over the native timber ban, the key to tackling climate change and showing the sustainability of the industry.

Timber Towns Victoria continues to maintain representation on appropriate external committees and groups ensuring consistent timber related messages are conveyed.

The Planning Scheme

Timber Towns Victoria works with member Councils where required to assist and reflect desired relationships with the forestry industry. Members reported recent storms created havoc and left large trees uprooted that could be value added. Through meeting discussions, member Councils were able to offer sawmill details to the affected member and work together to achieve a positive outcome.

TTV membership and services

Timber Towns Victoria delivers information and updates, to members keeping members informed on industry issues and activities. Throughout the year invited guests attended and/or made presentations at TTV meetings, including:

- Patrick Groenhout, Managing Director, Greenwood Strategy. (Forestry, agribusiness and natural resources strategic solutions)
- Jim Magee, Forestry worker and Forestry Industry business owner, Victorian Timber Engineering Pty Ltd. (Consultancy and machinery sales)
- Deb Kerr, CEO, Victorian Forest Products Association
- Lesia Clark, General Manager, Gippsland Forestry Hub
- Sandy Kam, National Coordinator, National Timber Council Association
- Simon Gatt, Chair, Gippsland Forestry Industry Hub

Timber Towns Victoria encourages members to actively participate and provide feedback / comments to documents such as the creation of government submissions, the periodic reviews of the Strategic Plan the adoptions and implementation of a Timber Encouragement Policy.

Members have access to a member only area of the associations website where sensitive documents can be viewed with a members log in. The TTV website is:

www.timbertownsvictoria.com.au

TTV produced a comprehensive Industry Domestic Value Add report – Specialised Analysis for the Timber Towns Victoria council areas that provides valuable statistics generated from the timber industry. This is available to download and view on our website at

<https://timbertownsvictoria.com.au/resources/#other>

> then >

[.id TIMBER INDUSTRY – SPECIALISED ANALYSIS FOR THE TIMBER TOWNS VICTORIA COUNCIL AREAS 2021](#)

TTV is a voice for the members to be heard on current timber industry related issues that are affecting them. We listen to what is happening on the ground from our members and advocate to the State and Federal Governments on behalf of our members for their best interest and desired outcomes.





TIRES

The Timber Impact Roads Evaluation Study (TIRES) is a study of road management strategies and investment for timber industry roads in Victoria. The Victorian timber industry is a substantial contributor to the state's regional and overall economies and is widely dispersed across the state, placing significant demands on Victorian road and bridge infrastructure.

The TIRES Report identifies the local road infrastructure required for the efficient operation of the Victorian forest industry, focusing on the first mile; the local roads utilised at the beginning of each timber run, currently unmaintained by state funding.



- Timber Industry Roads Evaluation Study

Project objectives

The TIRES Report brief identified four key objectives:



To identify and quantify the development needs of the established road network which supports the timber industry supply chain.



To prepare a state-wide model of rolling plans for the prioritised development of roads used by the timber industry supply chain, which are cognitive of linkages with main and national road, rail and port infrastructure.



To demonstrate the economic benefits to the State Government, local government, industry and community of maintenance and development of the road network.



The expectation that information gathered from this report will be utilised in applications for government funding.

Project scope

The study aims to provide a documented assessment of the projected road and bridge infrastructure to serve timber industry needs in each of the four TIRES regions – Green Triangle, Gippsland, Central Victoria and the Mallee – for the next five years. The study also provides planning priorities for road network upgrades for this period.

The current TIRES report 2023 – 2027 is in the final stages of draft versions and will be completed this year ready for publishing to member councils only used as a tool in applying for state roads funding where the timber industry has affected local roads.





Trees and Carbon



Carbon sequestration is the process of capturing and storing atmospheric carbon dioxide. Trees make an invaluable contribution to reducing the rate of climate change by mitigating carbon dioxide accumulation in the atmosphere. Through photosynthesis, trees act as a carbon sink and absorb atmospheric carbon dioxide.

Australian forest and wood products store or sequester millions of tonnes of carbon dioxide which offsets some of the greenhouse gases emitted in Australia. When the wood from trees is used in construction and other timber products, the carbon will stay stored within the product for the life of the product.



Carbon Warrior is a project created by the Frame and Truss Manufacturers Association of Australia (FTMA) to help tackle the fight against climate change. One of the easiest ways consumers can make a difference is through the choice of materials, and currently timber is the most prominent and versatile building material that provides an answer to the climate crisis. More information on Carbon Warrior and their Policy Proposal for 2022 can be found on their website <https://carbonwarrior.com.au/>





The Ultimate Renewable™



The Ultimate Renewable™ brand is an industry campaign to promote the sustainability and environmental benefits of Australia's locally grown timber and the use in our every day life.

TTV promotes and stands behind The Ultimate Renewable™

Wood Encouragement Policy

Wood encouragement policies are increasingly being adopted by numbers of local governments and their peak bodies, making a commitment to consider wood as the primary construction material in all new-build and refurbishment projects where its use is feasible.

TTV advocates to Councils looking to make a difference when it comes to climate change to adopt a wood encouragement policy under Planet Ark's 'Make it wood' campaign. More information can be found at <https://makeitwood.org/wood-encouragement-policy>



Treasurer's Report

TIMBER TOWNS ASSOCIATION INC.

STATEMENT OF INCOME & EXPENDITURE FOR THE PERIOD 1ST JULY 2020 TO 30TH JUNE 2021



| | | | |
|--|-----------|------------------|---------------------|
| CASH BOOK BALANCE AT 1ST JULY 2021 | | | \$71,184.80 |
| ADD RECEIPTS | | | |
| ATO – BAS Refund | 4,792.00 | | |
| Subscriptions | 27,500.00 | | |
| GST Collected | 2,750.00 | 35,042.00 | |
| | | | \$106,226.80 |
| LESS PAYMENTS | | | |
| GST Paid | 6,536.52 | | |
| Bank Fees | 10.47 | | |
| Website Cost | 674.27 | | |
| Secretarial Fees | 16,990.55 | | |
| Consumer Affairs Vic Fees | 60.10 | | |
| Consultancy Fees | 44,045.01 | | |
| Audit & Accounting | 2,750.00 | | |
| Catering | 335.45 | | |
| Meeting Venue Hire | 290.91 | | |
| Printing & Stationery | 459.09 | 72,152.37 | |
| CASH BOOK BALANCE AT 30TH JUNE 2022 | | | \$34,074.43 |
| | | | ===== |
| BANK STATEMENT AS CASH BOOK AT 30TH JUNE 2022 | | | \$34,074.43 |
| | | | ===== |



NOTES

FORMING PART OF THE
STATEMENT OF INCOME & EXPENDITURE
FOR THE PERIOD 1ST JULY 2021 TO 30TH JUNE 2022

SUBSCRIPTIONS

| | |
|-----------------------|--------------------|
| EGSC Shire | 2,750.00 |
| Wellington Shire | 2,750.00 |
| Moyne Shire | 2,750.00 |
| Colac Otway Shire | 2,750.00 |
| Gannawarra Shire | 2,750.00 |
| Ballarat City Council | 2,750.00 |
| Gannawarra Shire | 2,750.00 |
| Moorabool Shire | 2,750.00 |
| EGSC Shire | 2,750.00 |
| Colac Otway Shire | 2,750.00 |
| Glenelg Shire | 2,750.00 |
| TOTAL | \$30,250.00 |

STATEMENT OF INCOME & EXPENDITURE SANDHURST SELECT MORTGAGE FUND FOR THE PERIOD 1ST JULY 2021 TO 30TH JUNE 2022

SANDHURST ACCOUNT BALANCE

AT 1ST JULY 2021 \$123,636.73

ADD RECEIPTS

| | | |
|-------------------|--------|-------------------|
| Interest Received | 502.89 | 502.89 |
| | | 124,139.62 |

LESS PAYMENTS

| | | |
|-----|-------|-------|
| Nil | ----- | ----- |
|-----|-------|-------|

SANDHURST ACCOUNT BALANCE AT 30TH JUNE 2022

\$124,139.62

I recommend Timber Towns Victoria members receive this report.

Cr Tom Sullivan

Treasurer

Timber Towns Victoria



Timber Towns Victoria Presidents

| Start | Finish | Name | Shire |
|-------|---------|-----------------|----------------------|
| 1984 | 1987 | Brenda Murray | Shire of Orbost |
| 1987 | 1988 | Alan Billing | Shire of Colac |
| 1989 | 1990 | Paul Gilmore | Shire of Alexandra |
| 1990 | 1990 | Kevin Smith | Shire of Myrtleford |
| 1990 | 1990 | Paul Gilmore | Shire of Alexandra |
| 1993 | 1994 | Jim Ure | Mitchell Shire |
| 1994 | | Amalgamation | |
| 1995 | | Amalgamation | |
| 1996 | 1998 | Jim Ure | Mitchell Shire |
| 1999 | 2000 | Noel Harvey | Macedon Ranges Shire |
| 2000 | 2003 | Bob Orr | Hepburn Shire |
| 2003 | 2003 | Jenny Blake | Golden Plains Shire |
| 2003 | 2010 | Malcolm Hole | Wellington Shire |
| 2011 | 2012 | Bill Harrington | Baw Baw Shire |
| 2012 | 2016 | Jan Vonarx | Alpine Shire |
| 2017 | Current | Karen Stephens | Glenelg Shire |







TIMBER TOWNS VICTORIA

TIMBER TOWNS VICTORIA

ABN: 13 358 698 037

PO Box 152, Portland Vic 3305

T: 0428 891 728 | **E:** secretary@timbertownsvictoria.com.au

www.timbertownsvictoria.com.au